

AUTOKEYDEVICES present



Renault Commander

v.1.1

Renault Commander allows you to add a blank key or card for many of **Renault, Dacia, NISSAN, OPEL** cars via **OBD-2 socket**. **You DO NOT NEED any PIN code! Software programs keys/cards automatically**. Also, you can change VIN number in UCH module (immobilizer), for example, if your UCH module was previously used on another car.

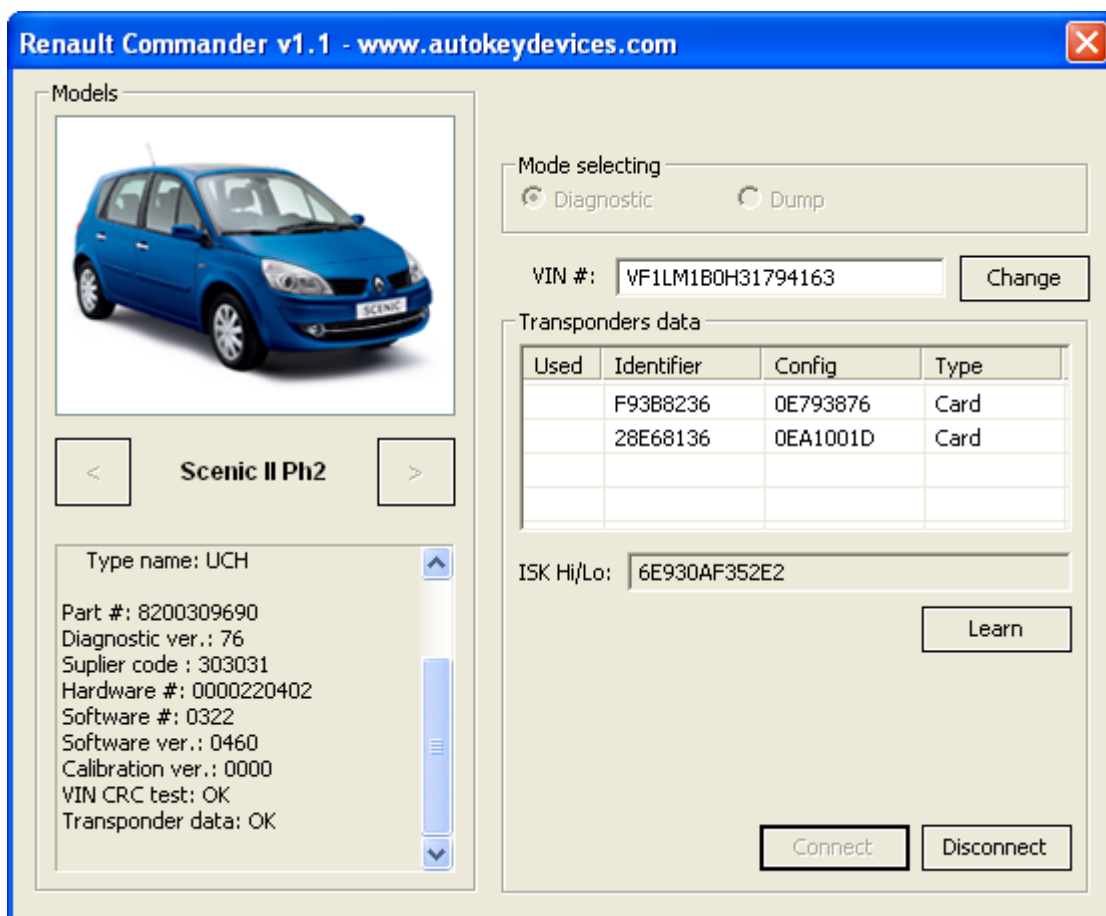
Kit includes:

- Renault Commander software
- User manual
- USB Interface

Models covered:

Models	Model code	Years
Clio II Ph2/3	X65	2002-2006
Espace IV	X81	2003-2006
Espace IV Ph2	X81	2006+
Kangoo MUX Ph2	X76	2002-2007
Laguna II	X74	2001-2005
Laguna II Ph2	X74	2005-2007
Logan	-	2004-2008
Logan Ph2	-	2008+
Master Ph2	X70	2002-2006
Master Ph3	X70	2007+
Megane II	X84	2003-2006
Megane II Ph2	X84	2007+
NISSAN Primestar	-	2003-2008
OPEL Movano	-	2002-2008
OPEL Vivaro	-	2002-2008
Sandero	-	2008+
Scenic II	X84	2003+
Scenic II Ph2	X84	2007+
Solenza	-	2003-2005
Trafic II	X83	2002-2006
Trafic II Ph2	X83	2007+
Twingo Ph2	X06	2002-2007
Velsatis	X73	2002+
Velsatis Ph2	X73	2006+

How it looks



How to connect

- 1. Switch ignition OFF**
2. Connect «**Renault Commander**» interface to USB-port.
(Install interface drivers, if needed. For help, refer to #Driver installation section)
3. Connect interface to OBD-II socket
4. Start «**Renault Commander**» software
5. Select car model using < > buttons
6. After you press Connect, you will see the following information(see. picture):
 - Car ID data
 - VIN and checksum status
 - Keys or Cards information

How to add a new key or card

1. **Switch ignition OFF**
2. Establish connection with a car (*refer to # How to connect section*)
3. You can program up to 4 keys or cards per session
4. Click «**Learn**», and you will see - "**Please remove key/card before learning.**" message
5. Remove the key from ignition lock or cards from card rack, and click OK for continue.
6. After that, you get the following message: "**Please insert next key/card. Push 'OK' to learn or 'CANCEL' to end learning. Learning takes about 10 sec.**"
7. Insert card to a card rack or switch ignition ON with key and click OK to learn or CANCEL to cancel learn. (Key/card learning takes approx. 10 sec.)
8. After 10 sec. key or card is learned. And you are back on step 7
9. When programming of four keys/cards is complete or you press CANCEL you will get message - "**To store result please select 'OK', to discard click 'NO'. Storing results takes about 30 sec.**". Just follow the instructions.

How to change a VIN

1. **Switch ignition OFF**
2. Establish connection with a car (*refer to # How to connect section*)
3. Enter a new VIN you need
4. Click – “Change” button, the software recalculates VIN checksum automatically and would make all necessary alternations.

FAQ

Q: Where can I get blank keys and cards?

A: You can get them form dealer or go to <http://shop.advanced-keys.co.uk/>